

FLIGHT SUMMARY REPORT

Flight Number: 95-123
Calendar/Julian Date: 20 June 1995 • 171
Sensor Package: Wild-Heerbrugg RC-10
Modis Airborne Simulator (MAS)
Airborne Visible and Infrared Imaging
Spectrometer (AVIRIS)
Area(s) Covered: Mountain Pass/Ivanpah/South Bay Area

Investigator(s): Green, JPL

Aircraft #: 706

SENSOR DATA

Accession #:	04939	----	----
Sensor ID #:	034	108	099
Sensor Type:	RC-10	MAS	AVIRIS
Focal Length:	12" 304.66 mm	----	----
Film Type:	Aerochrome IR SO-060	----	----
Filtration:	Wratten 12	----	----
Spectral Band:	510-900 nm	----	----
f Stop:	11	----	----
Shutter Speed:	1/200	----	----
# of Frames:	104	----	----
% Overlap:	60	----	----
Quality:	Good	----	----
Remarks:	Camera clock offset 4.0 seconds from navigation data		

Airborne Science and Applications Program

The Airborne Science and Applications Program (ASAP) is supported by three ER-2 high altitude Earth Resources Survey aircraft. These aircraft are operated by the High Altitude Missions Branch at NASA-Ames Research Center, Moffett Field, California. The ER-2s are used as readily deployable high altitude sensor platforms to collect remote sensing and in situ data on earth resources, celestial phenomena, atmospheric dynamics, and oceanic processes. Additionally, these aircraft are used for electronic sensor research and development and satellite investigative support.

The ER-2s are flown from various deployment sites in support of scientific research sponsored by NASA and other federal, state, university, and industry investigators. Data are collected from deployment sites in Kansas, Texas, Virginia, Florida, and Alaska. Cooperative international scientific projects have deployed the aircraft to sites in Great Britain, Australia, Chile, and Norway.

Photographic and digital imaging sensors are flown aboard the ER-2s in support of research objectives defined by the sponsoring investigators. High resolution mapping cameras and digital multispectral imaging sensors are utilized in a variety of configurations in the ER-2s' four pressurized experiment compartments. The following provides a description of the digital multispectral sensor(s) and camera(s) used for data collection during this flight.

Airborne Visible and Infrared Imaging Spectrometer

The Airborne Visible and Infrared Imaging Spectrometer (AVIRIS) is the second in the series of imaging spectrometer instruments developed at the Jet Propulsion Laboratory (JPL) for earth remote sensing. This instrument uses scanning optics and four spectrometers to image a 614 pixel swath simultaneously in 224 contiguous spectral bands (0.4-2.4 μm).

AVIRIS parameters are as follows:

IFOV:	1 mrad
Ground Resolution:	66 feet (20 meters) at 65,000 feet
Total Scan Angle:	30°
Swath Width:	5.7 nmi (10.6 km) at 65,000 feet
Spectral Coverage:	0.41-2.45 μm
Pixels/Scan Line:	614
Number of Spectral Bands:	224
Digitization:	10-bits
Data Rate:	17 MBPS

<u>Spectrometer</u>	<u>Wavelength Range</u>	<u>Number of Bands</u>	<u>Sampling Interval</u>
1	0.41 - 0.70 μm	31	9.4 nm
2	0.68 - 1.27 μm	63	9.4 nm
3	1.25 - 1.86 μm	63	9.7 nm
4	1.84 - 2.45 μm	63	9.7 nm

All AVIRIS data is decommuted and archived at JPL and not currently available for public distribution. For further information contact Rob Green at Jet Propulsion Laboratory, 4800 Oak Grove Drive, Mail Stop 183-501, Pasadena, California 91109-8099.

Modis Airborne Simulator

The Modis Airborne Simulator (MAS) is a modified Daedalus multispectral scanner configured to replicate the capabilities of the Moderate-Resolution Imaging Spectrometer (MODIS), an instrument to be orbited on an EOS platform. MODIS is designed for the measurement of biological and physical processes and atmospheric temperature. The Modis Airborne Simulator records fifty 12-bit channels of multispectral data and is configured as follows:

Spectral Channel	Band center (μm)	Bandwidth (μm)	Spectral Range
1	0.549	0.044	0.527-0.571
2	0.658	0.053	0.631-0.684
3	0.704	0.042	0.683-0.725
4	0.745	0.041	0.725-0.766
5	0.786	0.041	0.765-0.807
6	0.827	0.042	0.806-0.848
7	0.869	0.042	0.848-0.891
8	0.909	0.033	0.893-0.926
9	0.947	0.046	0.924-0.970
10	1.608	0.053	1.582-1.635
11	1.670	0.052	1.644-1.695
12	1.723	0.05	1.698-1.748
13	1.775	0.05	1.750-1.800
14	1.825	0.046	1.802-1.849
15	1.88	0.045	1.856-1.901
16	1.93	0.45	1.909-1.954
17	1.98	0.048	1.955-2.003
18	2.03	0.048	2.005-2.053
19	2.08	0.047	2.056-2.103
20	2.128	0.047	2.105-2.152
21	2.177	0.047	2.154-2.201
22	2.227	0.047	2.203-2.250
23	2.276	0.047	2.253-2.300
24	2.326	0.047	2.303-2.350
25	2.375	0.047	2.351-2.398

Spectral Channel	Band center (μm)	Bandwidth (μm)	Spectral Range
26	2.958	0.136	2.889-3.026
27	3.119	0.123	3.058-3.181
28	3.265	0.146	3.192-3.338
29	3.437	0.142	3.366-3.509
30	3.565	0.144	3.493-3.637
31	3.747	0.138	3.668-3.816
32	3.893	0.156	3.815-3.971
33	4.064	0.143	3.992-4.135
34	4.156	0.065	4.124-4.189
35	4.389	0.113	4.332-4.446
36	4.514	0.140	4.444-4.584
37	4.647	0.144	4.575-4.720
38	4.823	0.179	4.734-4.913
39	4.992	0.145	4.919-5.064
40	5.139	0.122	5.078-5.120
41	5.275	0.124	5.214-5.337
42	8.557	0.396	8.359-8.755
43	9.711	0.509	9.457-9.966
44	10.473	0.441	10.252-10.693
45	10.976	0.439	10.757-11.196
46	11.929	0.421	11.719-12.140
47	12.822	0.376	12.634-13.010
48	13.190	0.447	12.966-13.413
49	13.661	0.587	13.368-13.954
50	14.155	0.395	13.957-14.352

Sensor/Aircraft Parameters:

Spectral Bands: 50 (digitized to 16-bit resolution)
 IFOV: 2.5 mrad
 Ground Resolution: 163 feet (50 meter at 65,000 feet)
 Swath Width: 22.9 mi/19.9 nmi (36 km)
 Total Scan Angle: 85.92°
 Pixels/Scan Line: 716
 Scan Rate: 6.25 scans/second

Ground Speed: 400 kts (206 m/second)
Roll Correction: Plus or minus 3.5 degrees (approx.)

For specific information regarding flight documentation, sensor parameters, and areas of coverage contact the Aircraft Data Facility, NASA-Ames Research Center, Mail Stop 240-6, Moffett Field, California 94035-1000 (Telephone: 415-604-6252). Additional information regarding ER-2 acquired photographic and digital data is also available through the Aircraft Data Facility.

Camera Systems

Various camera systems and films are used for photographic data collection. Film types include high definition color infrared, natural color, and black and white emulsions. Available photographic systems are as follows:

- Wild-Heerbrugg RC-10 metric mapping camera
 - 9 x 9 inch film format
 - 6 inch focal length lens provides area coverage of 16 x 16 nautical miles from 65,000 feet
 - 12 inch focal length lens provides area coverage of 8 x 8 nautical miles from 65,000 feet
- Hycon HR-732 large scale mapping camera
 - 9 x 18 inch film format
 - 24 inch focal length lens provides area coverage of 4 x 8 nautical miles from 65,000 feet
- IRIS II Panoramic camera
 - 4.5 x 34.7 inch film format
 - 24 inch focal length lens
 - 90 degree field of view provides area coverage of 2 x 21.4 nautical miles from 65,000 feet

The U.S. Geological Survey's EROS Data Center at Sioux Falls, South Dakota serves as the archive and product distribution facility for NASA-Ames aircraft acquired photographic and digital imagery. For information regarding photography and digital data (including areas of coverage, products, and product costs) contact EROS Data Center, Customer Services, Sioux Falls, South Dakota 57198 (Telephone: 605-594-6151).

Additional information regarding ER-2 acquired photographic and digital data is available through the Aircraft Data Facility at Ames Research Center. For specific information regarding flight documentation, sensor parameters, and areas of coverage contact the Aircraft Data Facility, NASA-Ames Research Center, Mail Stop 240-6, Moffett Field, California 94035-1000 (Telephone: 415-604-6252).

CAMERA FLIGHT LINE DATA
FLIGHT NO. 95-123

Accession # 04939

Sensor # 034

Page 1/2

Check Points	Frame Numbers	Time (GMT-hr, min, sec)		Altitude, MSL feet/meters	Cloud Cover/Remarks
		START	END		
A - B	6996-7001	18:26:39	18:29:01	65833/20066	Clear
C - D	7002-7009	18:35:40	18:38:58	65588/19991	Clear; oblique (frame 7002)
E	7010	19:24:28	---	66712/20334	Oblique frame
E - F	7011-7017	19:24:55	19:27:44	66520/20275	Oblique (frame 7011)
G - E	7018-7027	19:36:30	19:40:43	66818/20366	Clear
H - F	7028-7038	19:48:03	19:52:43	67018/20427	Light cirrus obstruction (frames 7037-7038); oblique (frame 7028)
G - E	7039-7049	19:59:25	20:04:06	66900/20391	10-30% cirrus obstruction (frames 7042- 7045)
H - F	7050-7058	20:11:33	20:15:18	67314/20517	Clear
I - J	7059-7072	20:22:44	20:28:49	67314/20517	Clear
K - L	7073-7086	20:36:39	20:42:44	67950/20711	Clear

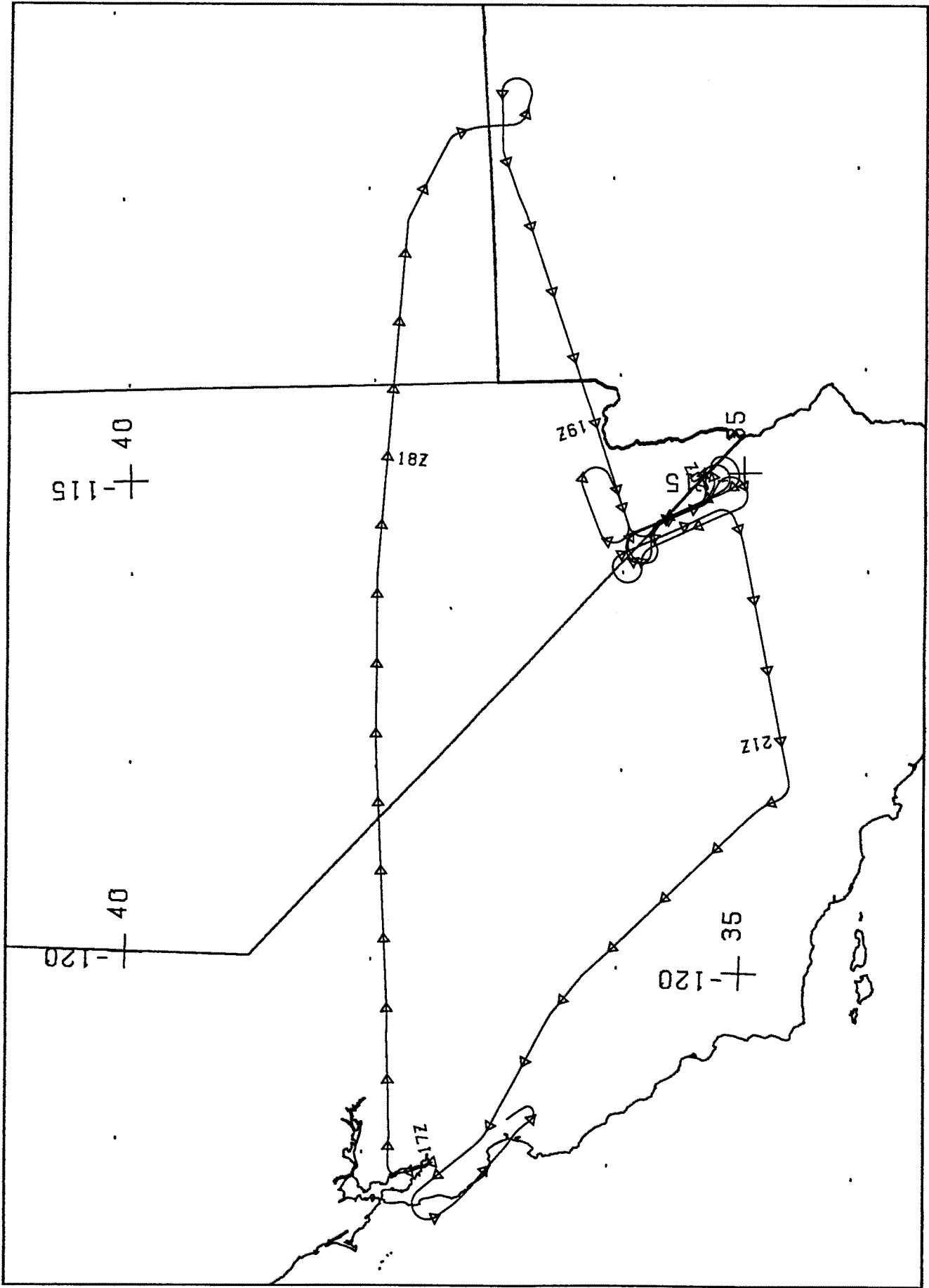
CAMERA FLIGHT LINE DATA
FLIGHT NO. 95-123

Accession # 04939

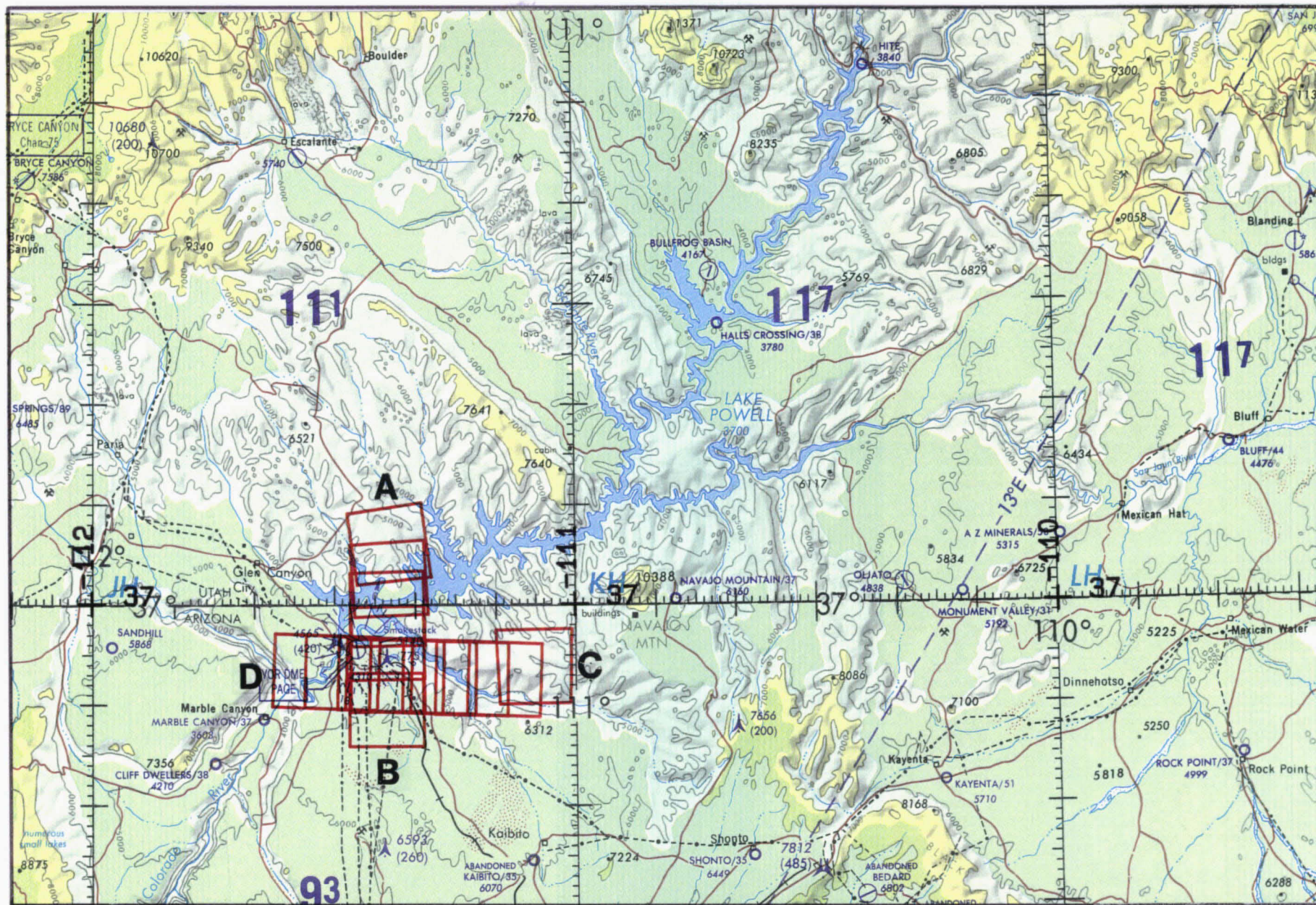
Sensor # 034

Page 2/2

Check Points	Frame Numbers	Time (GMT-hr, min, sec)		Altitude, MSL feet/meters	Cloud Cover/Remarks
		START	END		
M - N	7087-7092	21:04:09	21:26:28	68817/20975	Clear
O - P	7093-7099	21:39:07	21:41:54	68957/21018	Clear



FLIGHT 95-123 20 JUNE 1995 A/C 706 RC-10 / AVIRIS / MAS-50



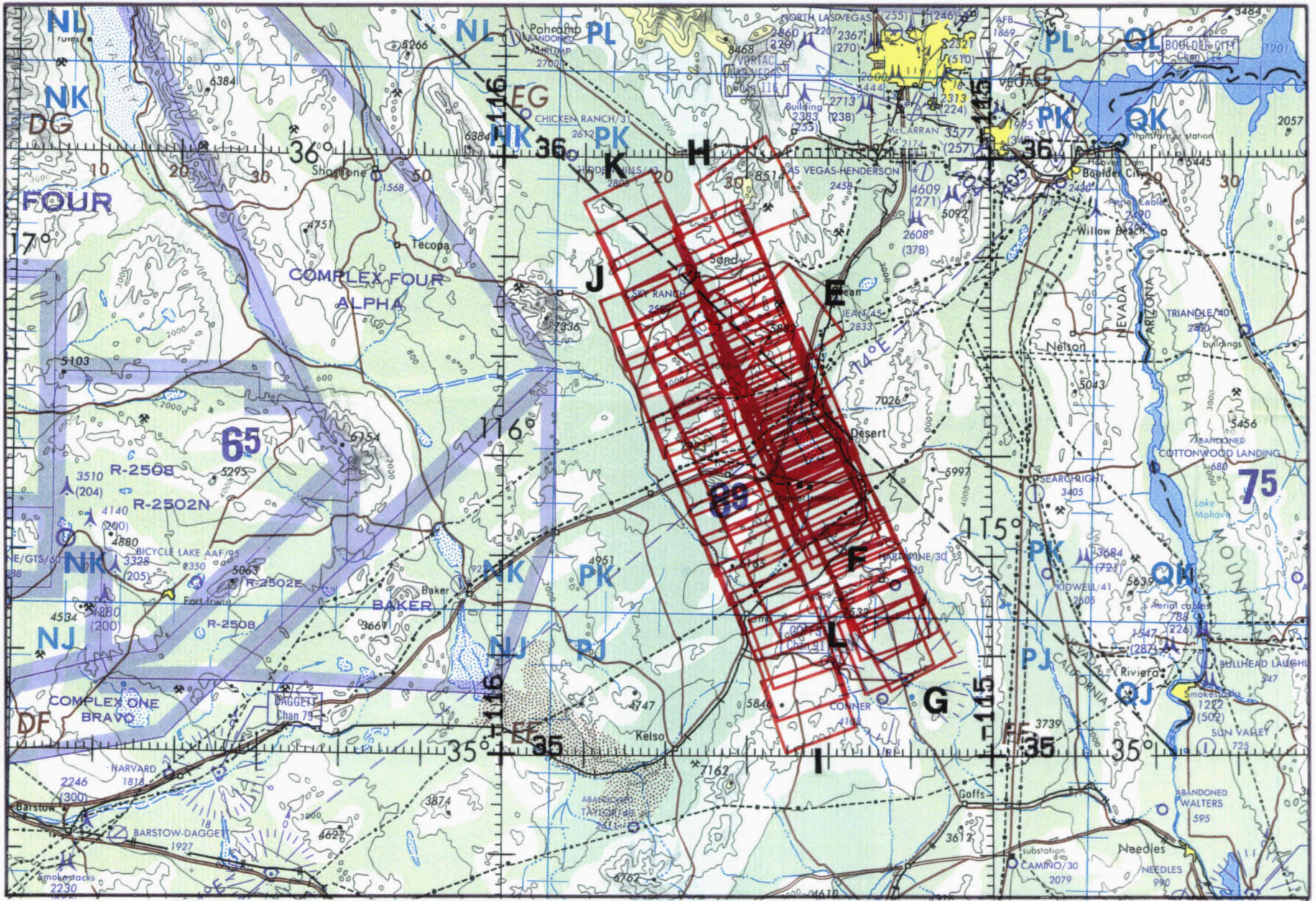
FLIGHT 95-123

20 JUNE 1995

A/C 706

RC-10 / MAS-50 / AVIRIS

ONC 6-19



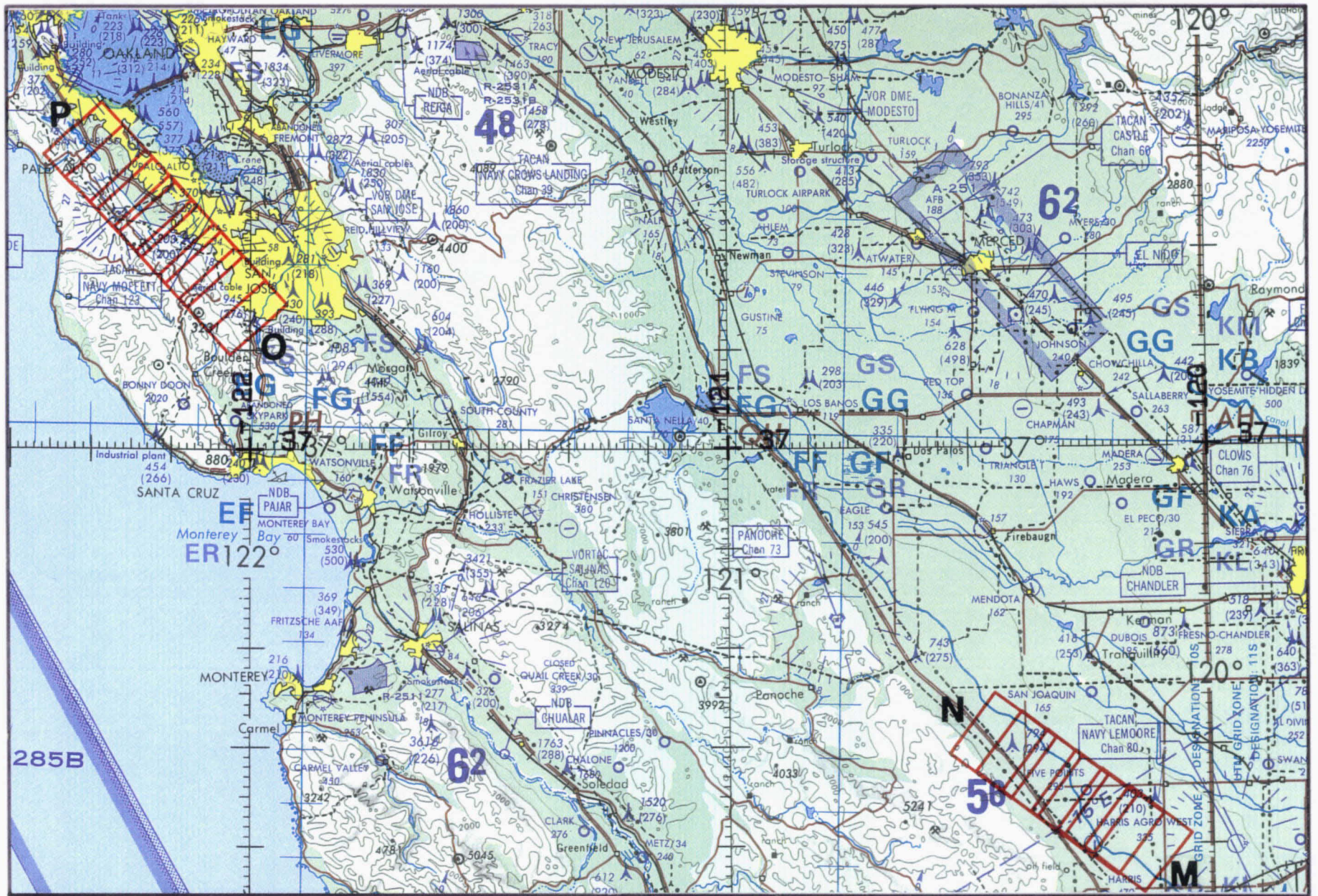
FLIGHT 95-123

20 JUNE 1995

A/C 706

RC-10 / AVIRIS / MAS-50

ONC 6-18



FLIGHT 95-123

20 JUNE 1995

A/C 706

RC-10 / AVIRIS / MAS-50

ONC 6-18